

ENCLOSURE SYSTEMS SoluComp® | MultiProf®



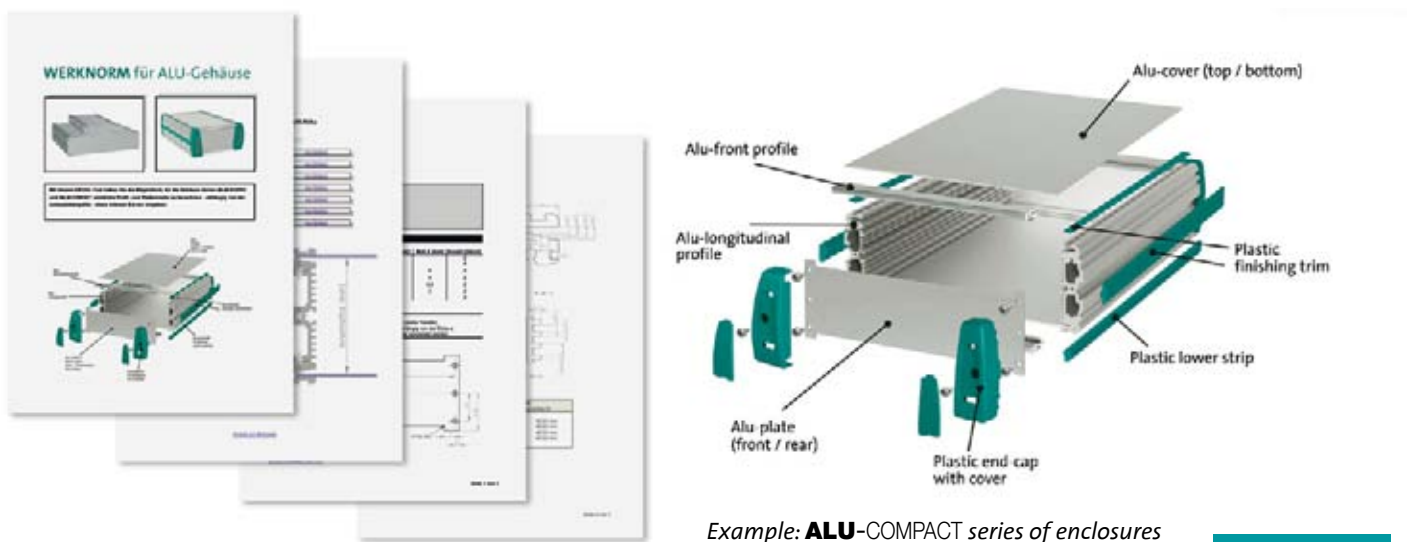
SoluComp® | MultiProf®

Well-engineered enclosure systems and tailor-made solutions for your components

Perfect color, shape, features

The MultiProf® - concept

Thanks to modular construction methods and an almost unlimited profile geometry combined with contemporary design, the MultiProf® series - multifunctional profile systems – offers completely customizable configuration options with respect to shape and size.



Example: **ALU-COMPACT** series of enclosures

Further information:

If you want to know more about the MultiProf®- concept, please scan the QR-Code next to the right with your smartphone



The concept is based on aluminum and/or plastic profiles that can be modified by a combination of different components to produce the base support when it is screwed to the front-plate. You can use this to produce a variety of different shapes and sizes. Grooves on the inside of the profiles support the PC-boards, nuts or threaded strips where components or mounting plates can be attached. The plates for the front, top and the bottom of the enclosure may be screwed down or simply inserted into grooves. On this basis, a large number of different applications may be developed such as enclosures for electronic equipment, monitors, desktop, console, DIN-rail enclosures or built-in boxes. The construction and engineering of the components are based on the principle of “form follows function“ since the components are tailored to match the PC-boards or to the customers specific requirements.

The constant availability of a large number of standard enclosures and accessories like foil keyboards, wall brackets, etc. save a lot of time and money for the development work. The result is a distinctive design based on the choice of color in combination with the moulds and end pieces. What is more, reordering/replacement purchases are simplified since the different components are available separately, as subassemblies or as completely assembled systems.

Enclosures can be machined, surfaces treated and printed as required by the customer. The sizes of the enclosures are determined by the individual customer's application.

The SoluComp® - concept

SoluComp® - Solution Components – are well-engineered enclosures made from high-quality synthetic material, which are supported by a large variety of functional components. Without sacrificing attractive design criteria, the modular construction and engineering of the components is based on the principle of “form follows function”.



Assembly:

The complete electronic board is placed on the stands with the ribs facing into the enclosure and the cabinet is simply screwed shut.

Your advantage:

It is not necessary to screw down the electronic board, reduced assembly time, no screws required for PC boards, secure installation.

Further information:

If you want to know more about the **SoluComp®** - concept, please scan the QR-Code next to the right with your smartphone



Cost-effective solutions for custom enclosures can easily be implemented by specific changes to the tools that are used for the standard versions. The constant availability of a large number of standard enclosures and accessories like foil keyboards, wall brackets, etc. save a lot of time and money for the development work. In this way, a custom enclosure may be developed by simply replacing the front plate or modifying the colour scheme.

Because the different components are perfectly matched to each other during the development phase, PC-boards and other electronic components can be screwed down or inserted directly into the enclosures much like a tailor-made suit. The conductive surface coating ensures complete electromagnetic compatibility (EMC). What is more, reordering/replacement purchases are simplified since the different components are available separately, as subassemblies or as completely assembled systems. Different types of monitor enclosures are directly tailored to the respective display. Almost all models may be adapted to match the customer's requirements by replacing the entire front, face and rear with exchangeable inserts.

Your advantages at a glance:

- No fitting of the LCD into the enclosure
- Utilisation of simple standard enclosures
- No expensive milling required
- Less time required for the development of the PC-boards
- Simple assembly and disassembly of individual components

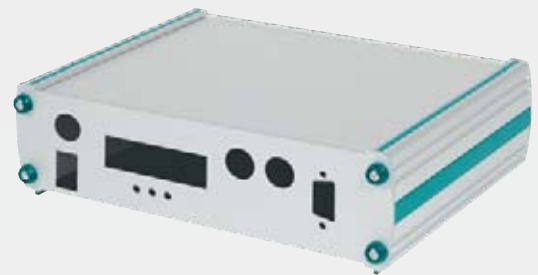
ALUMINUM enclosures MultiProf®



ALU-ECOPAC SERIES

Standard

Height H = 1,18; 1,57; 1,97; 2,36; 2,67; 3,15; 3,54; 3,94; 4,33 or 4,72 inch
for PC-board (L x W) 6,3 x 3,94 inch; 6,3 x 7,87 inch; 7,87 x 5,43 inch or
7,87 x 9,37 inch



ALU-ECOPAC SERIES

Custom-made (free choice of L x W)

Height H = 1,18; 1,57; 1,97; 2,36; 2,67; 3,15; 3,54;
3,94; 4,33 or 4,72 inch; in all surfaces



ALU-FRAMEPAC SERIES

Standard 10,4" to 26" (LCDs 4:3)
standard surface naturally anodized



ALU-FRAMEPAC SERIES

Custom-made (free choice of L x W) for
LCD 10.4" to 55" (4:3 or 16:9), in all surfaces



ALU-DISPLAYPAC SERIES

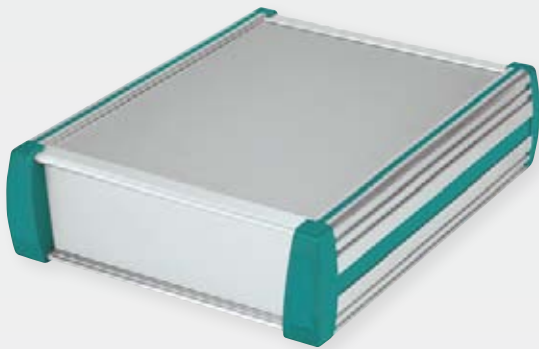
Custom-made (free choice of L x W)
for 10.4" to 55" displays (4:3 or 16:9),
in all surfaces



ALU-MONITOR SERIES

Custom-made (free choice of L x W)
Depth D = 1,18; 1,57; 1,97; 2,36; 2,67; 3,15 or
3,94 inch, in all surfaces

Let us convince you with our large variety of standard solutions



ALU-COMPACT SERIES

Standard

Height H = 1,18; 1,57; 1,97; 2,36; 2,67; 3,15;
or 3,94 inch for PC-board (L x W) 6,3 x 3,94 inch;
6,3 x 7,87 inch; 7,87 x 5,43 inch or 7,87 x 9,37 inch



ALU-COMPACT SERIES

Custom-made (free choice of L x W)

Height H = 1,18; 1,57; 1,97; 2,36; 2,67; 3,15;
or 3,94 inch, in all surfaces



ALU-PRIMUS SERIES

Standard for PC-boards: W = 1,97; 2,56; 3,15; 3,94; 5,12 or 6,3
inch. Custom-made, free choice of length for PC-boards.

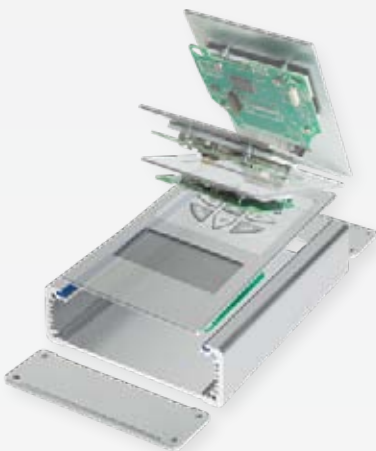
Front plates made of aluminum or plastic (ALU-PRIMUS ECO),
also available as ALU-PRIMUS HD up to IP 67



ALU-PRIMUS SERIES

With plastic corners, optional in different colors

Custom-made, free choice of length for PC-board
width W = 1,97; 2,56; 3,15; 3,94; 5,91 or 6,3 inch,
with optional wall mounts



ALU-OPTIMA SERIES

Standard for PC-board (L x W) 6,3 x 3,94 inch

Custom-made, free choice of length
for PC-board width W = 3,15; 3,94; 5,12 or 6,3 inch,
aluminum or plastic faceplates



The end caps of the enclosures and
the decorative strips are by default
available in 10 attractive colors.



Accessories:

Foil-keyboards (standard and customized), LCD,
KM-Touch-Sticks (metal enclosure)
and touchscreen displays

PLASTIC enclosures SoluComp®



TAW - SERIES
consisting of:
MAXI-, MEDIUM-, MINI- and MICRO-TAW



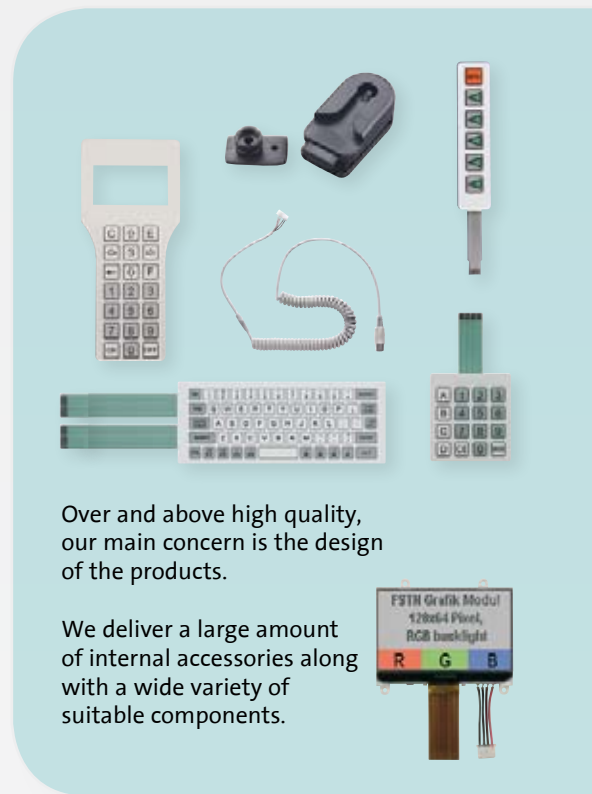
TOP-SERIES



Tabletop chargers (TLS) wall-chargers (WLS)
are universal charging stations for any type of enclosure



KM-Touch-Stick
(metallic enclosure)
with spring-loaded points,
6 colors, magnetic holders
and chain



Over and above high quality,
our main concern is the design
of the products.

We deliver a large amount
of internal accessories along
with a wide variety of
suitable components.







SPA-enclosure for scanners, antennas,
biochip and card readers, swivelling mount



L - SERIES
consisting of:
MAXI-L, MEDIUM-L and MINI-L

SoluComp®- enclosures available

-  in NawaRo®-version
(made of bioplastic)
-  in AMIK®-version
(with antimicrobial equipment)
-  in lacquered and
powder coated surface
-  in OptiHapt®-version
(softtouch-surface)

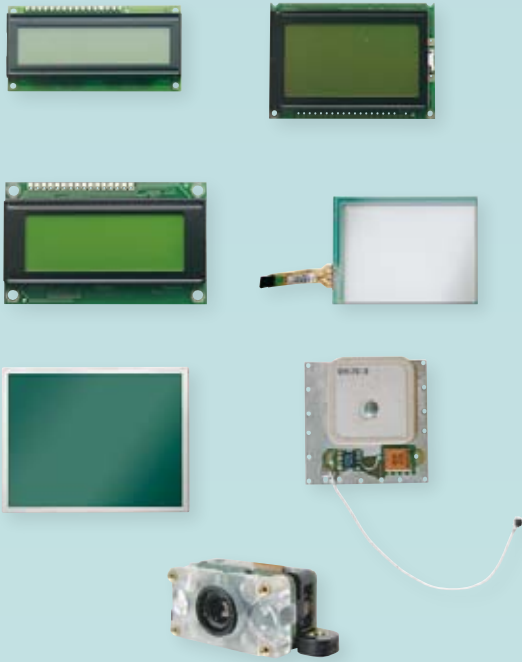




WINNER CDH - SERIES
consisting of:
CDH-2, CDH-4 and CDH-6



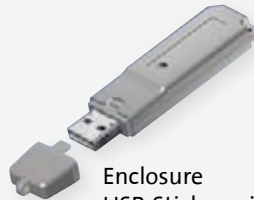
COMPACT - SERIES
consisting of:
MINI-, MINI-COMPACT-PLUS,
MEDIUM- , MAXI-COMPACT
and MAXI-COMPACT-L



KEYTOUCH KT - SERIES
consisting of:
KT4,7"/4,8", KT5,6"/5,7",
KT6,4", KT7" and KT10,4" (16:9)



Enclosures for AKKU: APP-SERIES consisting of APP-2 and APP-3
equipped with a base plate, these can be attached to any enclosure



Enclosure
USB-Stick, available
by default in
10 attractive colors



KEYTOUCH KT12" and KT15"



About Richard Wöhr GmbH

Since the company was established in 1967, companies with business activities in electronics, electrical engineering and automation, medical and dental technology, mechanical engineering and instrumentation, metal processing, plastic processing and castings place their trust in the capabilities offered by our company. Over the years, new business segments were added, i.e. the production of enclosures and keyboards as well as sheet metal processing and systems engineering.

We are continuously extending the design, development and manufacturing capacities in Höfen/Enz. As a family-run enterprise that has been successful for many years we are committed to our location, maintain business values like credibility, trust and reliability, align our processes with the requirements of our customers and regard our workforce as competitive advantage and not as an expense. We are convinced that today's growth is the basis for tomorrow's investments.

We develop, manufacture and distribute a wide variety of products consisting of industrial components in the areas of control, operating and display, including industrial enclosures, foil-keyboards, front panels and foils as well as input systems. Our product range includes simple, cost-effective standard designs through to complex, customer-specific solutions in systems engineering. Metallic and plastic surfaces are treated and improved by means of varnishing and powder coating, silk screening and pad printing or by modern grinding and blast technologies. Our quality management system is certificated according to EN ISO 9001, EN ISO 13485 (medical) and EN ISO 14001 (environment). The company's capacity for innovation is reflected by a huge number of commercial trademark rights since we are actively involved in developments in the conflict that exists between humans and technology. Our product dedication as well as the high proportion of in-house production enables us to offer express services for all ranges. Give us a challenge!

Richard Wöhr GmbH
Gräfenau 58-60
D-75339 Höfen/Enz

Telephone: (49) 7081 9540-0
Fax: (49) 7081 9540-90
E-Mail: Richard@WoehrGmbH.de
Internet: www.WoehrGmbH.de

Perfect color, shape, features